



Exterior Insulation Finish Systems

07 24 00

PUCCS



THE ULTIMATE EXTERIOR INSULATION RAINSCREEN FINISH SYSTEM

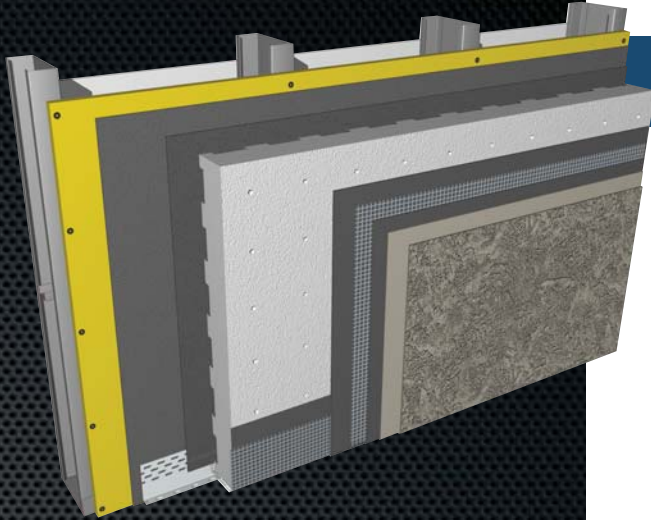
The DuROCK PUCCS series of Exterior Insulation Finish Systems is the ultimate in insulated rainscreen technology! The patented circular drainage pattern of the PUCCS insulation board provides unparalleled moisture drainage and drying capability. The thermal resistance of the insulation, combined with the air barrier property of the various moisture barriers, greatly enhances the energy efficiency of any commercial and high rise building clad or retrofit with PUCCS. PUCCS RMC-1 EIFS, intended for use on low rise residential construction, incorporates DuROCK's Polar Bear air/moisture barrier and adhesive, which is specifically formulated for use over wood sheathing. This Canadian breakthrough in EIFS technology culminated when PUCCS RMC-1 became the first EIF System to meet the intent of the National Building Code of Canada for use over wood substrates. Please visit our website for the latest specifications and 3D colour details on the DuROCK PUCCS series of Exterior Insulation finish Systems.



PRESSURE-UTILIZED COMPARTMENTED CAVITY SYSTEM

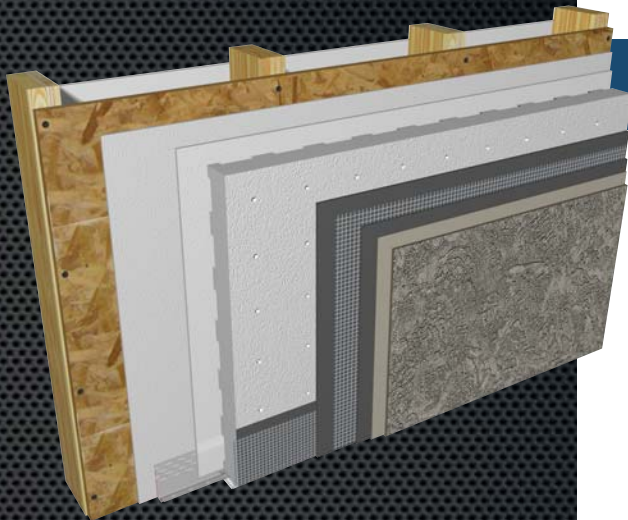


THE ULTIMATE EXTERIOR INSULATION RAINSCREEN FINISH SYSTEM



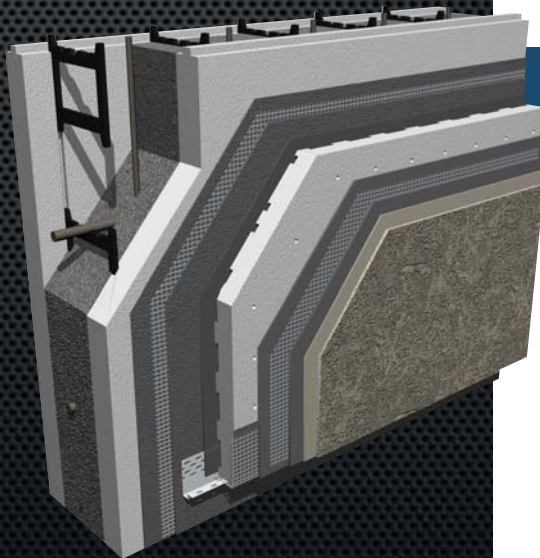
PUCCS EIFS FOR COMMERCIAL AND HIGH RISE

PUCCS EIFS for Commercial and High Rise construction has been evaluated by CCMC for compliance to the Technical Guide for EIFS, and is certified for use on buildings required to be of non-combustible construction and on buildings over three storeys in height. This system incorporates a trowel-applied air/moisture barrier, and dependent upon the configuration of the wall assembly, may also provide the necessary condensation control.



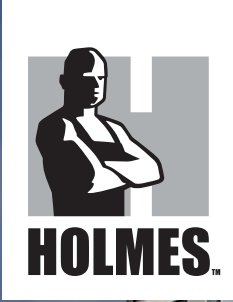
PUCCS EIFS FOR RESIDENTIAL AND LOW RISE

PUCCS EIFS for Residential and Low Rise Construction is an insulated cladding system specifically intended for use on wood sheathed walls. This system includes first and second planes of protection from precipitation, and a geometrically-defined drainage cavity that is 10 mm deep and 37% open. This system has been evaluated by the Canadian Construction Materials Centre (CCMC), this system complies with the CAN/ULC-S716.1 EIFS Materials and Systems Standard, and this system is certified to the test requirements of Article 3.2.3.8 of the National Building Code of Canada.



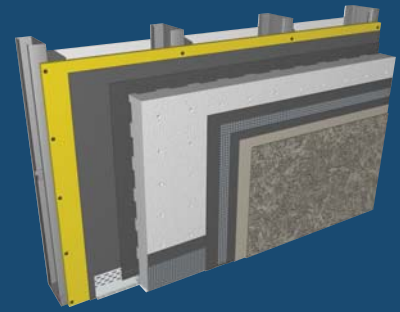
PUCCS EIFS FOR INSULATED CONCRETE FORM (ICF)

PUCCS EIFS for Insulated Concrete Form (ICF) construction combines the continuous insulation of EIFS and ICF to deliver the ultimate thermal performance! While this system is certified for use on buildings required to be of non-combustible construction and on buildings over three storeys in height, CCMC has yet to evaluate ICF as a substrate for EIFS.



Exterior Insulation Finish Systems

07 24 10



COMMERCIAL & HIGH RISE



PUCCS EIFS FOR COMMERCIAL AND HIGH RISE

PUCCS EIFS for Commercial and High Rise construction has been evaluated by CCMC for compliance to the Technical Guide for EIFS, and is certified for use on buildings required to be of non-combustible construction and on buildings over three storeys in height. This system incorporates a trowel-applied air/moisture barrier, and dependent upon the configuration of the wall assembly, may also provide the necessary condensation control.

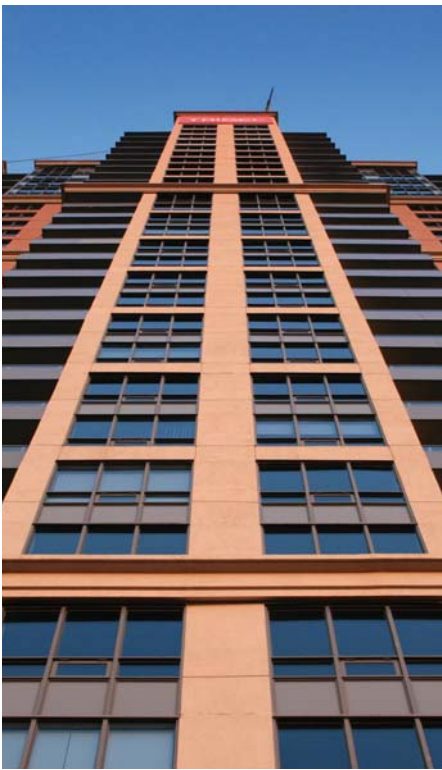
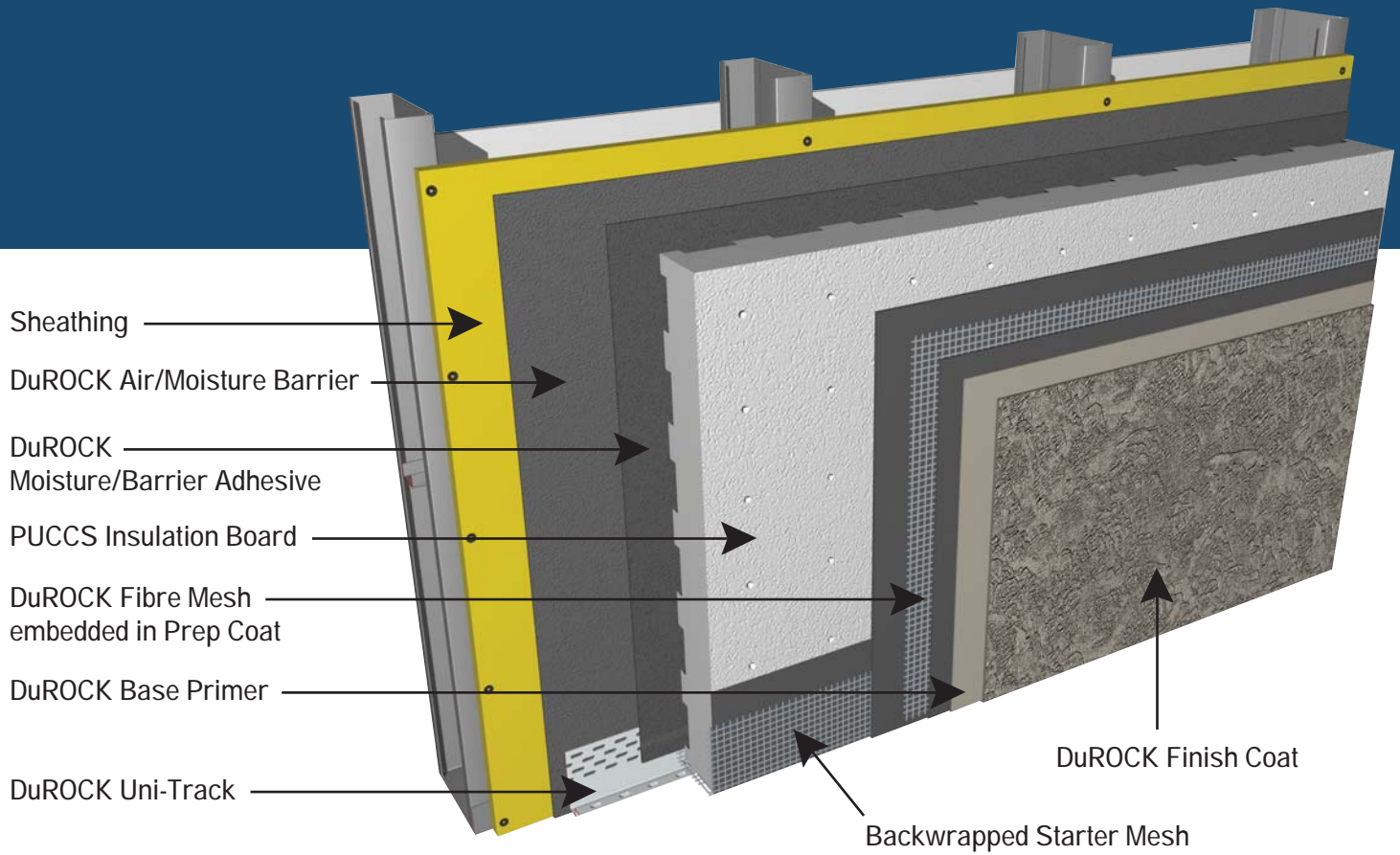


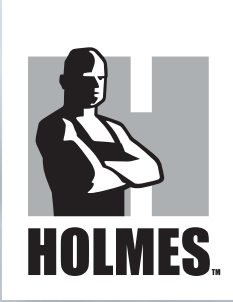


PRESSURE-UTILIZED COMPARTMENTED CAVITY SYSTEM

COMMERCIAL & HIGH RISE

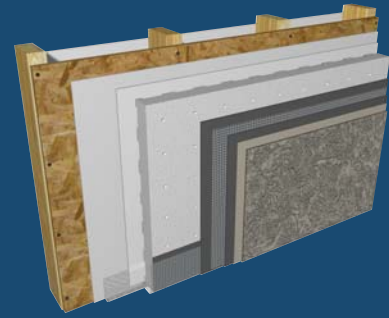
07 24 10





Exterior Insulation Finish Systems

07 24 10



RESIDENTIAL AND LOW RISE

PUCCS EIFS FOR RESIDENTIAL AND LOW RISE

PUCCS EIFS for Residential and Low Rise Construction is an insulated cladding system specifically intended for use on wood sheathed walls. This system includes first and second planes of protection from precipitation, and a geometrically-defined drainage cavity that is 10 mm deep and 37% open. This system has been evaluated by the Canadian Construction Materials Centre (CCMC), this system complies with the CAN/ULC-S716.1 EIFS Materials and Systems Standard, and this system is certified to the test requirements of Article 3.2.3.8 of the National Building Code of Canada.





PRESSURE-UTILIZED COMPARTMENTED CAVITY SYSTEM

RESIDENTIAL & LOW RISE

Wood Sheathing

DuROCK Polar Bear
Air/Moisture Barrier

DuROCK Polar Bear
Moisture/Barrier Adhesive

PUCCS Insulation Board

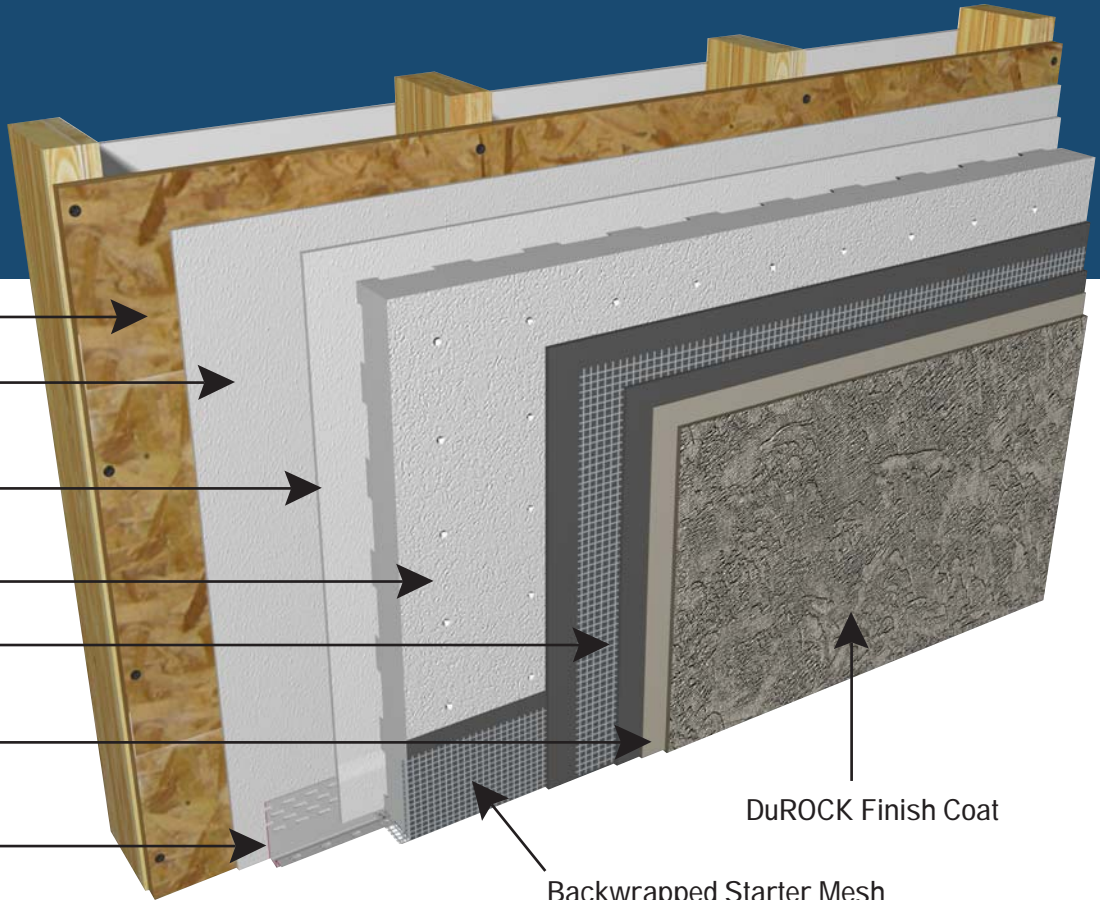
DuROCK Fibre Mesh
embedded in Prep Coat

DuROCK Base Primer

DuROCK Uni-Track

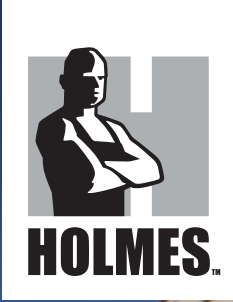
DuROCK Finish Coat

Backwrapped Starter Mesh



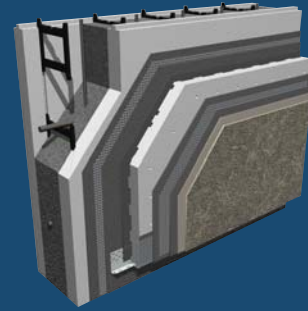
07 24 15





Exterior Insulation Finish Systems

07 24 10



INSULATED CONCRETE FORM

PUCCS EIFS FOR INSULATED CONCRETE FORM (ICF)

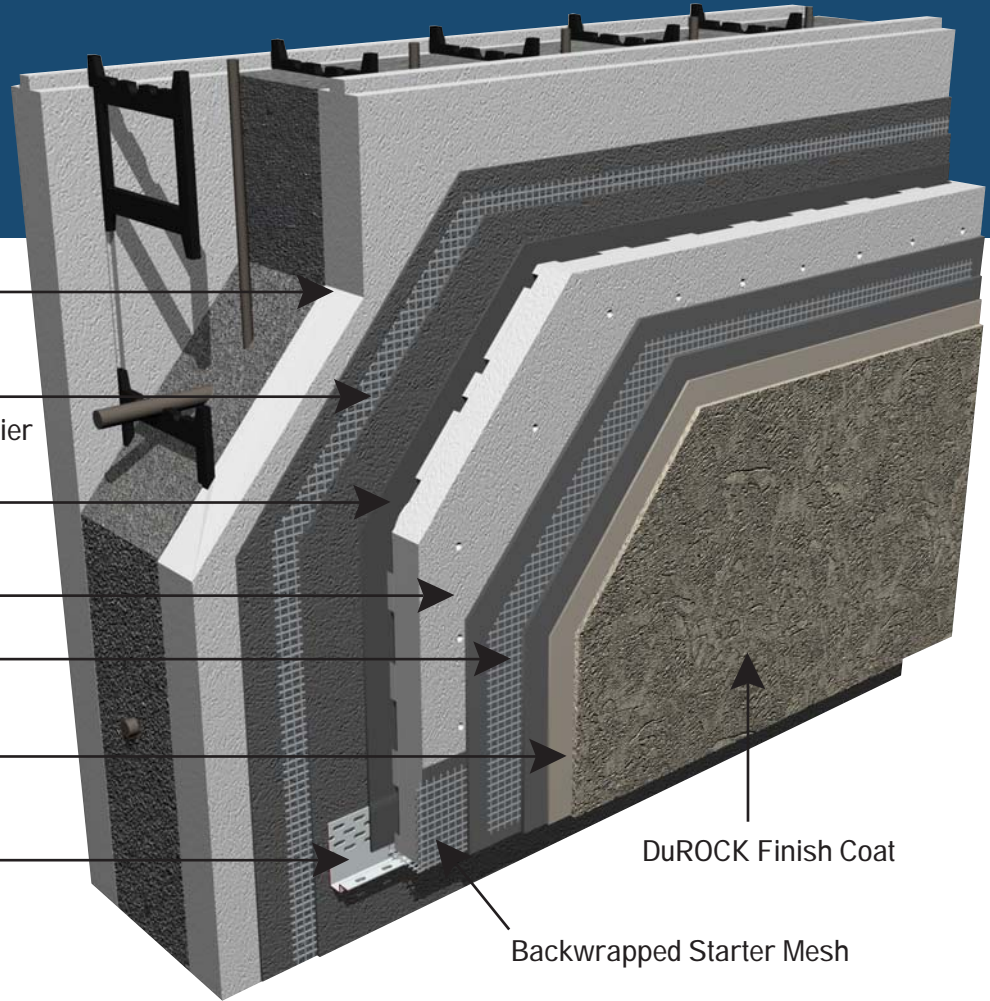
PUCCS EIFS for Insulated Concrete Form (ICF) construction combines the continuous insulation of EIFS and ICF to deliver the ultimate thermal performance! While this system is certified for use on buildings required to be of non-combustible construction and on buildings over three storeys in height, CCMC has yet to evaluate ICF as a substrate for EIFS.





PRESSURE-UTILIZED COMPARTMENTED CAVITY SYSTEM

INSULATED CONCRETE FORM



DuROCK approved Insulated Concrete Form System

DuROCK Fibre Mesh embedded in DuROCK Cement Bear moisture barrier

DuROCK Cement Bear Moisture/Barrier Adhesive

PUCCS Insulation Board

DuROCK Fibre Mesh Embedded in Prep Coat

DuROCK Base Primer

DuROCK Uni-Track

DuROCK Finish Coat

Backwrapped Starter Mesh

07 24 15





Exterior Insulation Finish Systems

07 24 00



InsulROCK

THE FINEST QUALITY EXTERIOR INSULATION AND FINISH SYSTEM

The DuROCK series of InsulROCK EIFS provides moisture control through the use of a secondary barrier to moisture intrusion, which may also be used to control air leakage. This barrier, combined with the system's ability to drain incidental moisture, makes InsulROCK EIFS well suited for cladding buildings of any size. The DuROCK InsulROCK System is intended for use on non-wood substrates. This system may incorporate either DuROCK Cement Bear (air/moisture barrier) or, where the design permits, DuROCK Vapour Block. The DuROCK InsulROCK Non-Combustible System is intended for use on walls where the building code does not permit the use of foamed plastic (i.e. polystyrene) insulation. This typically applies to walls in close proximity to a property line or another building.

InsulROCK
Exterior Insulation Finish Systems

DuROCK
TEXTURED PROTECTIVE COATINGS

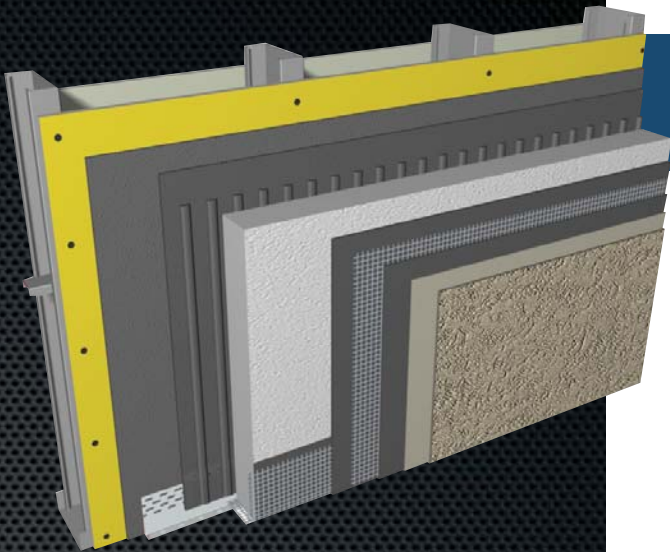


InsuROCK

Exterior Insulation Finish Systems

THE FINEST QUALITY EXTERIOR INSULATION AND FINISH SYSTEM

07 24 00



INSULROCK FOR COMMERCIAL & HIGH RISE CONSTRUCTION

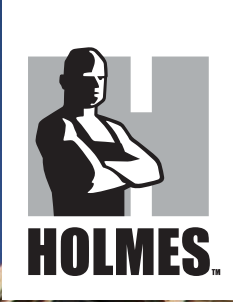
The DuROCK series of InsuROCK EIFS provides moisture control through the use of a secondary barrier to moisture intrusion, which may also be used to control air leakage. This barrier, combined with the system's ability to drain incidental moisture, makes InsuROCK EIFS well suited for cladding buildings of any size. The DuROCK InsuROCK System is intended for use on non-wood substrates. This system may incorporate either DuROCK Cement Bear (air/moisture barrier) or, where the design permits, DuROCK Vapour Block.



INSULROCK NC FOR WALLS REQUIRING NON-COMBUSTIBLE CLADDING

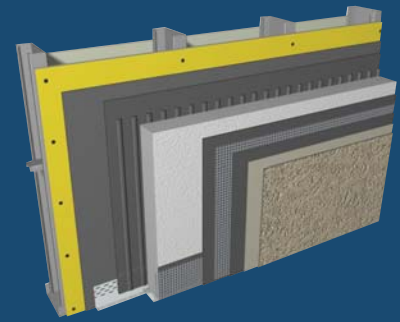
The DuROCK InsuROCK Non-Combustible System is intended for use on walls where the building code does not permit the use of foamed plastic (ie. polystyrene) insulation. This typically applies to walls in close proximity to a property line or another building.





Exterior Insulation Finish Systems

07 24 10



INSULROCK



COMMERCIAL & HIGH RISE CONSTRUCTION

The DuROCK series of InsulROCK EIFS provides moisture control through the use of a secondary barrier to moisture intrusion, which may also be used to control air leakage. This barrier, combined with the system's ability to drain incidental moisture, makes InsulROCK EIFS well suited for cladding buildings of any size. The DuROCK InsulROCK System is intended for use on non-wood substrates. This system may incorporate either DuROCK Cement Bear (air/moisture barrier) or, where the design permits, DuROCK Vapour Block.

InsulROCK
Exterior Insulation Finish Systems

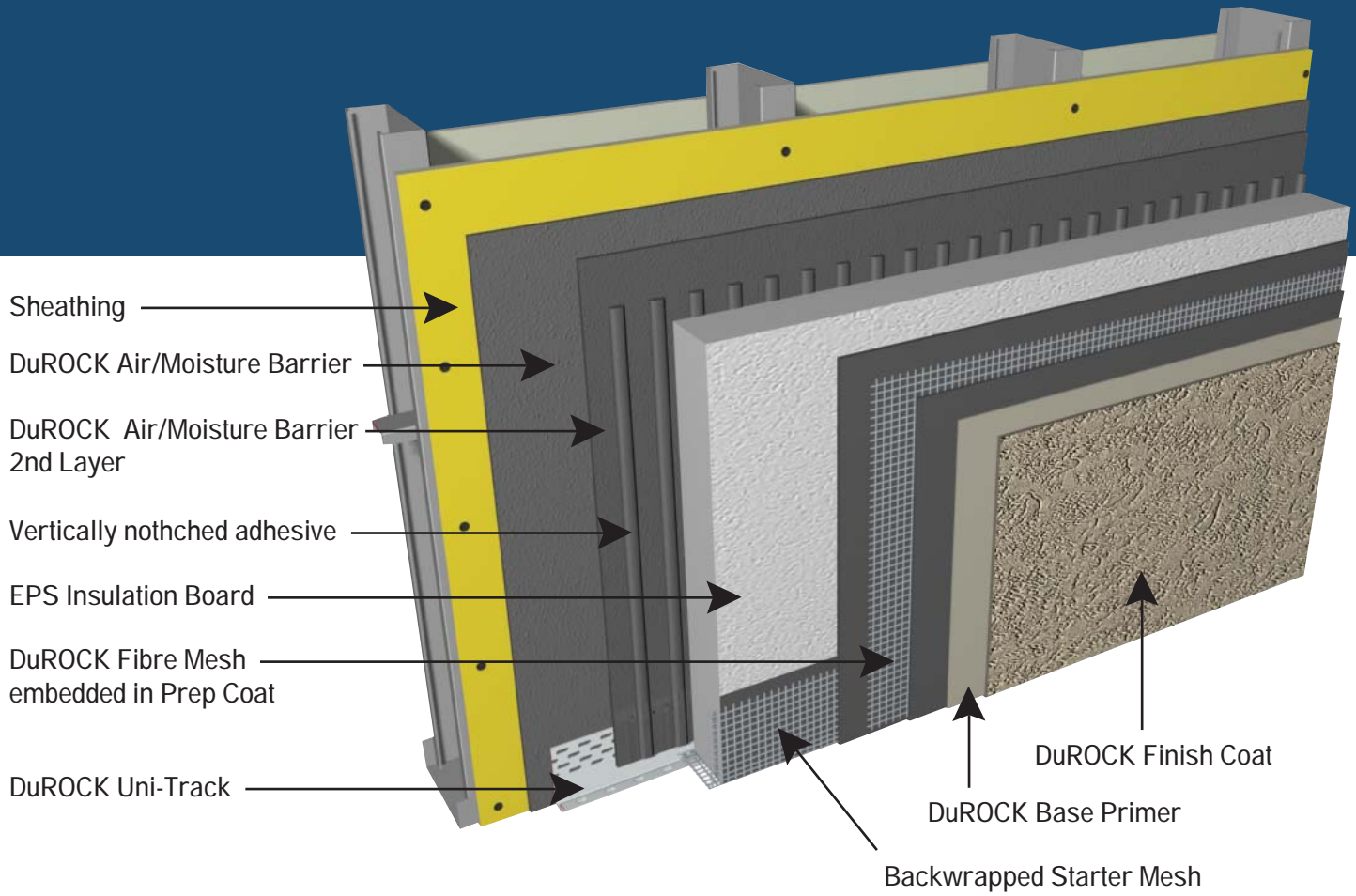
DuROCK
TEXTURED PROTECTIVE COATINGS

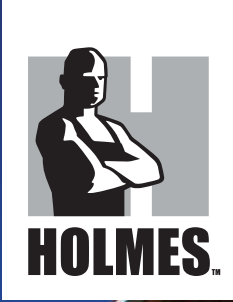
InsuROCK

Exterior Insulation Finish Systems

INSULROCK FOR COMMERCIAL & HIGH RISE CONSTRUCTION

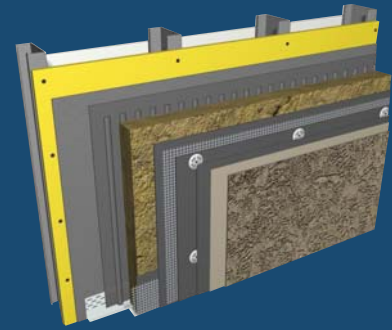
07 24 20





Exterior Insulation Finish Systems

07 24 10



INSULROCK NC

INSULROCK NC FOR WALLS REQUIRING NON-COMBUSTIBLE CLADDING

The DuROCK InsulROCK Non-Combustible System is intended for use on walls where the building code does not permit the use of foamed plastic (ie. polystyrene) insulation. This typically applies to walls in close proximity to a property line or another building.

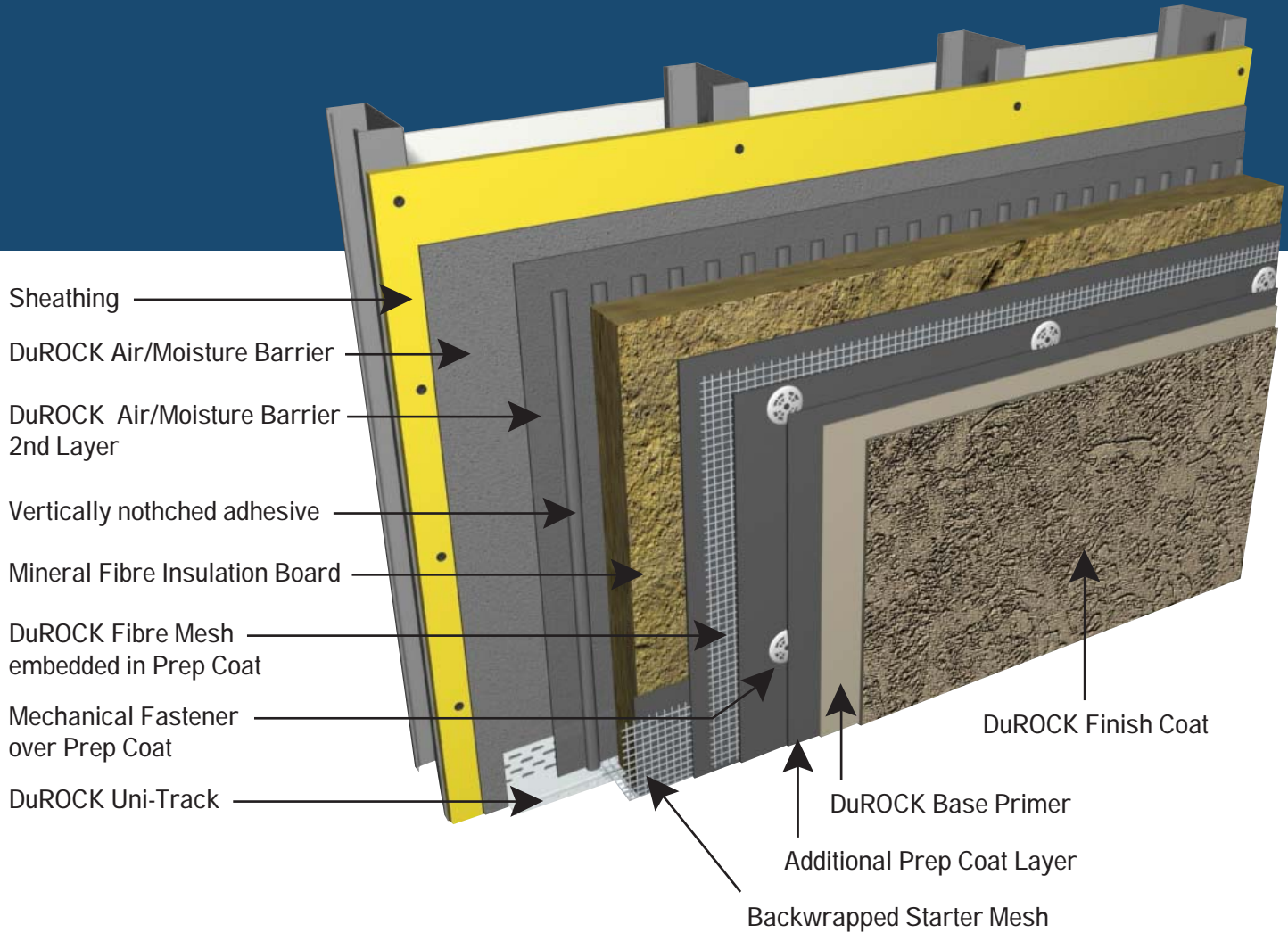
InsulROCK
Exterior Insulation Finish Systems

DuROCK
TEXTURED PROTECTIVE COATINGS

InsuROCK

Exterior Insulation Finish Systems

INSULROCK NC FOR WALLS REQUIRING
NON-COMBUSTIBLE CLADDING



07 24 40





Polymer Enhanced Stucco System

09 24 12



STUCCO PLUS

THE DuROCK STUCCO PLUS SYSTEM IS CONVENTIONAL STUCCO AT IT'S BEST!

Stucco Plus incorporates a polymer-enhanced, fibre-reinforced base coat for superior adhesive and cohesive strength, as well as a polymer-based finish which is available in a variety of textures and infinite colours. Metal lath is not required when applying Stucco Plus to cast-in place concrete or concrete masonry units. Please refer to our system specifications for further details. Stucco Plus can be adapted to rainscreen construction with the placement of a drainage mat or wood strapping between the sheathing membrane and the metal lath. Please refer to our system specifications for further details.

STUCCO PLUS
Polymer Enhanced Stucco System

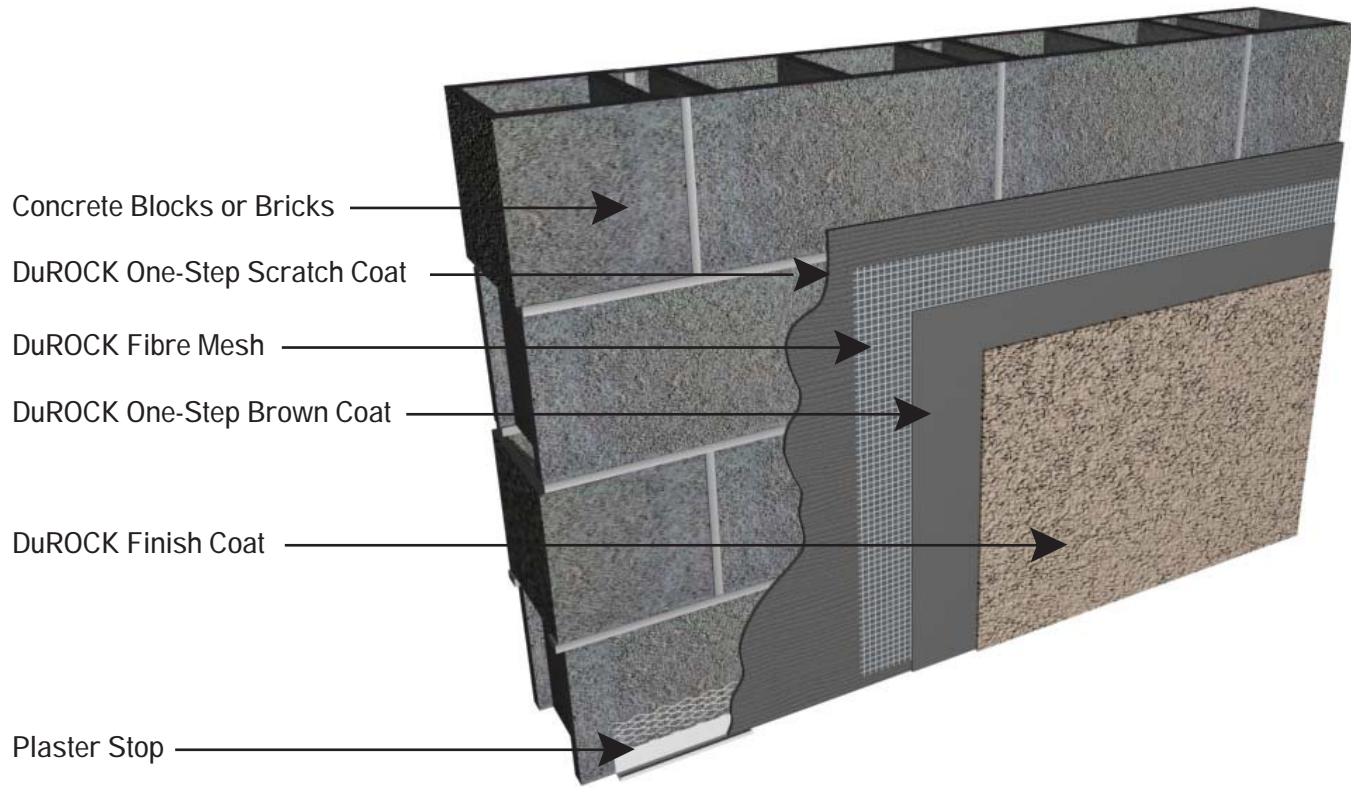
DuROCK
TEXTURED PROTECTIVE COATINGS



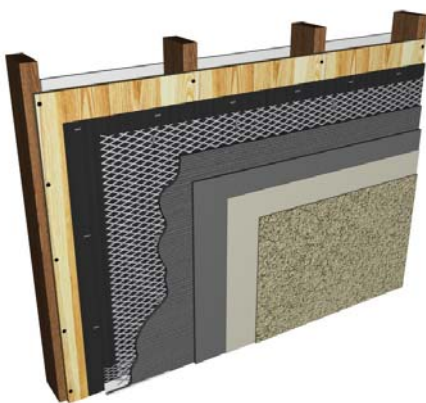
STUCCO PLUS

Polymer Enhanced Stucco System

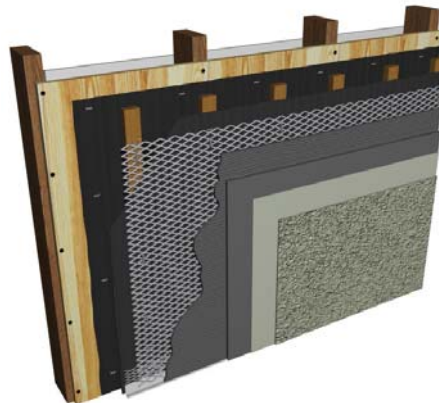
THE DuROCK STUCCO PLUS SYSTEM IS
CONVENTIONAL STUCCO AT IT'S BEST!



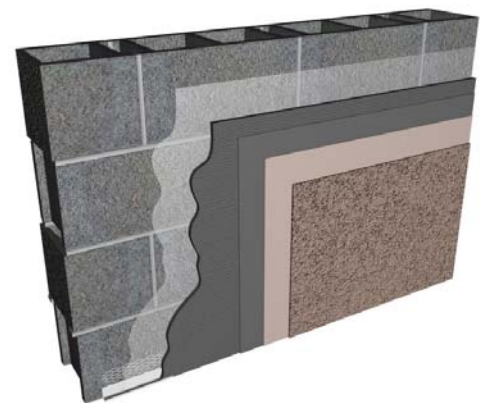
BLOCK OR BRICK WALL CONSTRUCTION



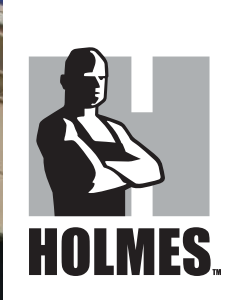
FRAME CONSTRUCTION



RAINSCREEN



MASS WALL CONSTRUCTION



Direct-Applied Exterior Finish System

09 24 15



DEFS

EXPERIENCE DUROCK'S AMAZING DIRECT APPLIED FINISH SYSTEM

DuROCK DEFS is intended for use on ventilated, steel frame, soffit and canopy assemblies that enclose unheated space. DuROCK DEFS may be used on similar wood frame assemblies providing there is wood sheathing separating the DEFS substrate from the framing. DuROCK DEFS may also be used over concrete.

DUROCK DEFS
Direct-Applied Exterior Finish System

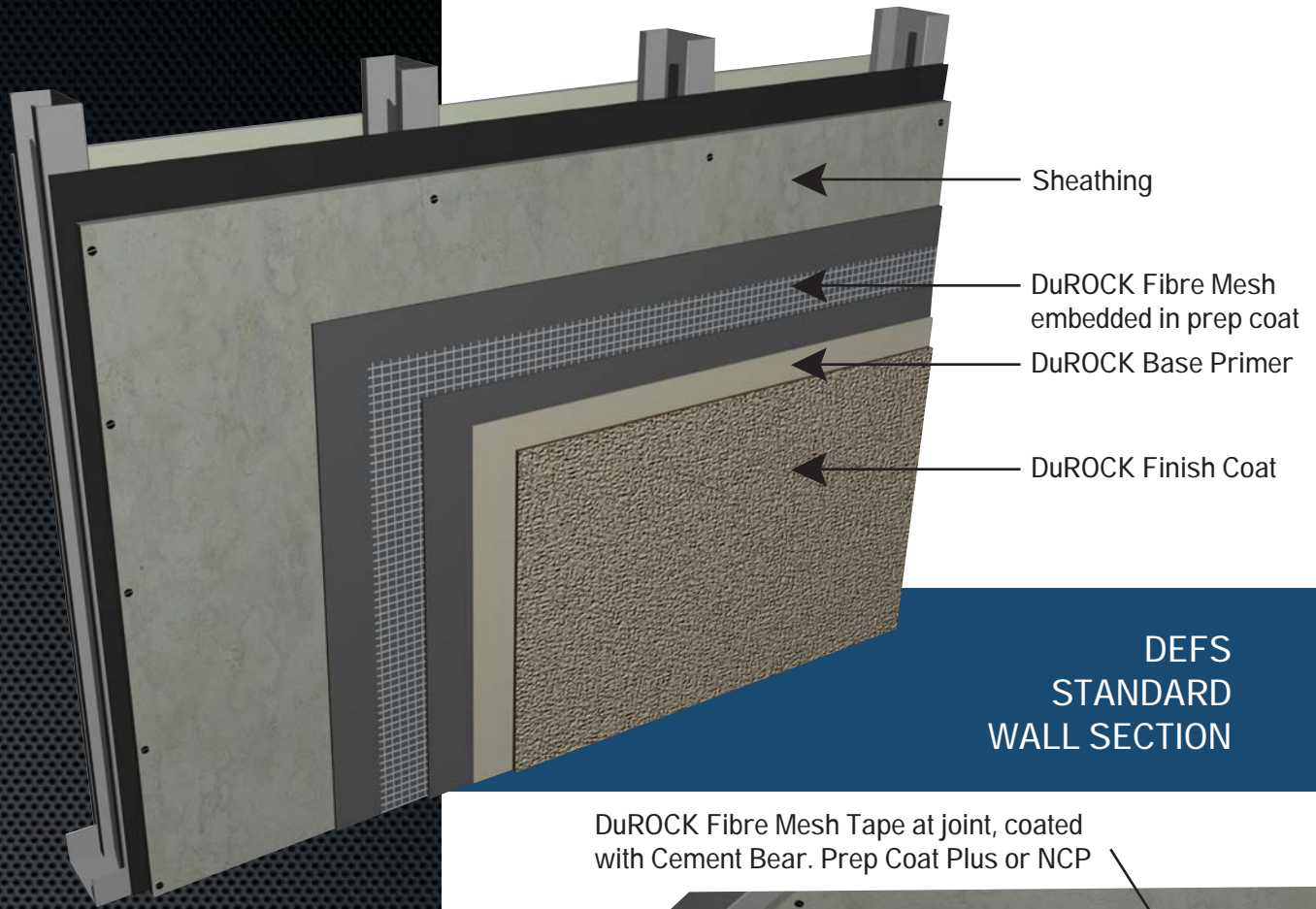
DuROCK
TEXTURED PROTECTIVE COATINGS



DUROCK DEFS

Direct-Applied Exterior Finish System

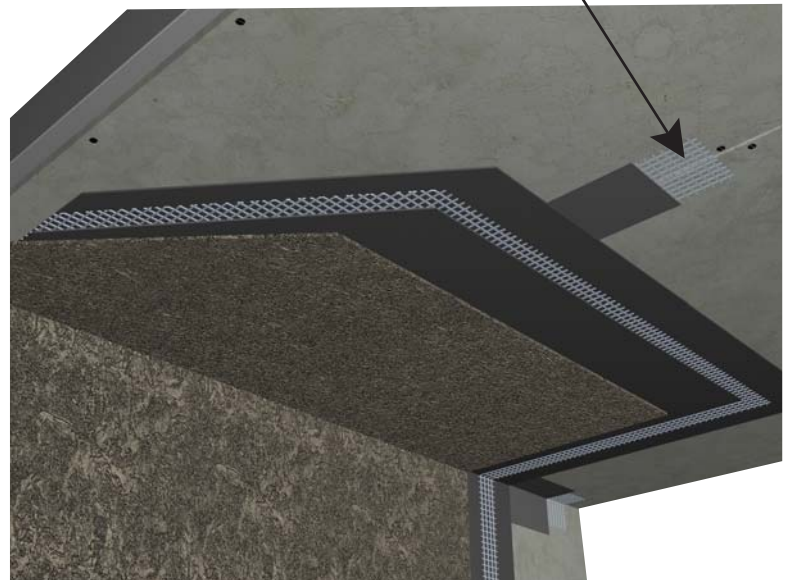
EXPERIENCE DUROCK'S AMAZING DIRECT APPLIED FINISH SYSTEM



DuROCK Fibre Mesh Tape at joint, coated with Cement Bear. Prep Coat Plus or NCP



DEFS AT PROJECTED CANOPY



DEFS AT SOFFIT



EIFS & STUCCO PRODUCT INFO

09 25 30



PRODUCTS

PRODUCTS FOR USE IN DUROCK EIFS & EXTERIOR FINISH SYSTEMS

The Finest Quality EIFS Products in the Industry including Barrier Coats, Leveling Coats, Base Coats Adhesives & Components.

EIFS & STUCCO
DuROCK Product Information

DuROCK
TEXTURED PROTECTIVE COATINGS

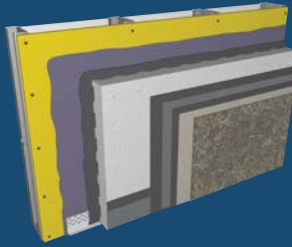
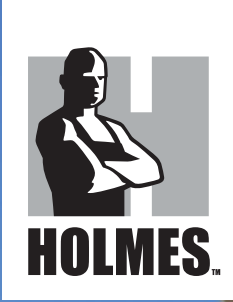


EIFS & STUCCO

DuROCK Product Information

PRODUCTS FOR USE IN DUROCK EIFS & EXTERIOR FINISH SYSTEMS





DuROCK EIFS and Stucco Products

09 25 21

BARRIER COATS



THE FINEST QUALITY BARRIER COATS IN THE INDUSTRY

BARRIER COATS
DuROCK Product Information



VAPOUR BLOCK

DuROCK Vapour Block is formulated with a co-polymer styrene-butadiene emulsion. It is a trowel applied high performance coating, applied onto non-combustible substrates as an air, vapour, and moisture barrier for DuROCK PUCCS and InsulROCK Systems. The low water absorption combined with a high flexural strength makes Vapour Block an ideal water penetration barrier for use on exterior wall systems; in particular glass-fibre faced gypsum sheathing, cement board, concrete, or masonry substrates. Check with DuROCK for use on other substrates. As part of an air barrier system for a wall assembly, Vapour Block is compatible with most transition membranes comprised of bituminous SBS with fabric or cross-laminated polyethylene backing, as well as bituminous mastics and polyurethane foam sealants. Refer to DuROCK system specifications for product specific guidelines.

POLAR BEAR

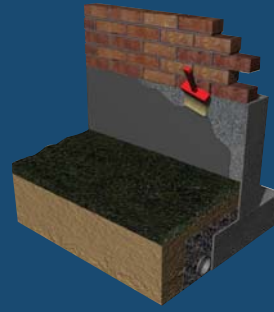
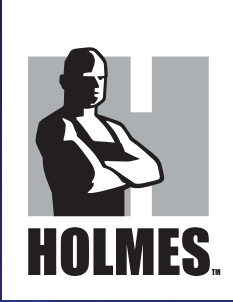
DuROCK Polar Bear is formulated with a 100% acrylic emulsion. It is a trowel-applied high performance coating for use over wood substrates as both an air and moisture barrier, in particular for the DuROCK PUCCS RMC-1 and InsulROCK RMC-1 Systems. Polar Bear contains fibers that enhance the cohesive and tensile strength for added durability. Polar Bear can also be used as an insulation adhesive. The low water absorption combined with a high flexural strength makes Polar Bear an ideal water penetration barrier for use on exterior wall systems; in particular plywood 12.7 mm (½ inch) thick and oriented strand board (OSB), minimum 11.1 mm (7/16 inch) thick. Check with DuROCK for use on other substrates. As part of an air barrier system for a wall assembly, Polar Bear is compatible with most transition membranes comprised of bituminous SBS with fabric or cross-laminated polyethylene backing, as well as bituminous mastics and polyurethane foam sealants. Refer to DuROCK system specifications for product specific guidelines.

CEMENT BEAR

DuROCK Cement Bear is formulated with a 100% acrylic emulsion that is field-mixed with Portland Cement. It is a trowel-applied high performance coating for use on non-combustible substrates, as an air and moisture barrier for DuROCK PUCCS and InsulROCK Systems. Cement Bear contains fibres that enhance the cohesive and tensile strength for added durability. Cement Bear can also be used as an insulation adhesive. The low water absorption combined with a high flexural strength makes Cement Bear an ideal water penetration barrier for use on exterior wall systems; in particular glass-fibre faced gypsum sheathing, cement board, concrete or masonry substrates. Check with DuROCK for use on other substrates. As part of an air barrier system for a wall assembly, Cement Bear is compatible with most transition membranes comprised of bituminous SBS with fabric or cross-laminated polyethylene backing, as well as bituminous mastics and polyurethane foam sealants. Refer to DuROCK system specifications for product specific guidelines.

ROLLER BEAR

DuROCK Roller Bear is intended for use as the first coat in a two-coat moisture barrier system that serves as the second plane of protection behind DuROCK PUCCS EIFS. Roller Bear is a factory-blended, ready-to-use, non-cementitious, polymeric coating that is supplied in 19 L (5 US gallon), 28 kg (62 lb) pails and is applied by spray, brush, or roller in a continuous layer to achieve a minimum dry thickness of 0.28 mm (11 mils) per coat.



DuROCK EIFS and Stucco Products

09 25 21

LEVELING COATS

THE FINEST QUALITY LEVELING COATS IN THE INDUSTRY

LEVELING COATS
DuROCK Product Information



ONE STEP READY MIX

DuROCK One Step Ready Mix is a formulated dry-mix cement parging, leveling coat and stucco base coat that is field-mixed with water. It is a trowel-applied polymer modified cement plaster, a mixture of Portland cement, silica sand, and dry-resins. It is a versatile product that can be used as a leveling coat for conventional stucco, concrete and masonry substrates, and also as the scratch and brown coats for DuROCK Stucco Plus. One Step Ready Mix has the benefit of high-early compressive and tensile strength, with excellent freeze-thaw stability and low water absorption. It is a convenient product since it requires only water to be added on site. One Step Ready Mix contains 1/4" fibers that enhance the cohesive and adhesive strength for added durability. It is also a low-shrinkage polymer modified cement that makes it ideal for uneven leveling coats.

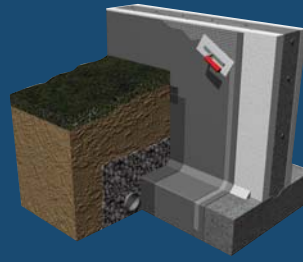
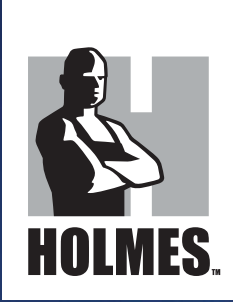
BIG EXTRA (BRUSH IT GREY)

B.I.G Extra is a dry mix cement parge specifically designed to enhance the appearance of cast-in-place concrete walls. B.I.G Extra is polymer modified and requires only the addition of water. B.I.G Extra hides surface irregularities such as cold joints, colour variations, and form distortions. B.I.G Extra can also be used to disguise minor cracking and honeycombs. B.I.G Extra is available in 44 lb (20 kg) bags.

ONE STEP CONCENTRATE (EXPORT ONLY)

DuROCK One Step Concentrate is a formulated dry-mix concentrate for use in cement parging, leveling coats and stucco base coats. It is field-mixed with Portland cement, silica sand and water. One Step Concentrate is a trowel or spray-applied polymer modified cement plaster, a mixture of minerals, fine aggregates, and dry-resins. It is a versatile product that can be used as a leveling coat for conventional stucco, concrete and masonry substrates, and also as the scratch and brown coats for DuROCK Stucco Plus. One Step Concentrate has the benefit of high-early compressive and tensile strength, with excellent freeze-thaw stability and low water absorption. One Step Concentrate contains 1/4" fibers that enhance the cohesive and adhesive strength for added durability. It is also a low-shrinkage polymer modified cement that makes it ideal for uneven leveling coats.





DuROCK EIFS and Stucco Products

09 25 22



BASE COATS

THE FINEST QUALITY BASE COATS IN THE INDUSTRY

BASE COATS
DuROCK Product Information



B2000

DuROCK B2000 is an acrylic-modified cementitious dry mix base coat designed for use over Expanded Polystyrene (EPS) Insulated Concrete Forms (ICF). B2000 forms a strong yet flexible, crack resistant base coat that is intended for use on the exterior, above-grade portion of ICF foundation walls. B2000 has high flexural and bond strength, is water vapour permeable, and has excellent freeze/thaw stability with low water absorption and low shrinkage.

PREP COAT

DuROCK Prep Coat is 100% acrylic emulsion that is field-mixed with Portland Cement. It is a trowel-applied high performance coating for use on DuROCK PUCCS and InsulROCK Systems as a non-combustible base coat and adhesive. Prep Coat is a flexible and durable base coat that can also be used as a leveling coat for stucco, concrete and masonry substrates. It has excellent freeze-thaw stability, low water absorption, breathable to water vapour and non-combustible. It is a convenient product since it requires only water to be added on site.

PREP COAT PLUS

DuROCK Prep Coat Plus is 100% styrene acrylic emulsion that is field-mixed with Portland Cement. It is a trowel-applied high performance coating for use on DuROCK PUCCS RMC and InsulROCK RMC Systems as a base coat and adhesive with enhanced flexibility and strength. Prep Coat Plus is a flexible and durable base coat that can also be used as a leveling coat for stucco, concrete and masonry substrates. It has excellent freeze-thaw stability, low water absorption, and breathable to water vapour. Prep Coat Plus can be applied as a high-build leveling coat, for added impact resistance on EIFS or to make a wall plumb and flat, applied up to 6.4 mm (1/4 inch) thick in a single pass if required.

PREP COAT D

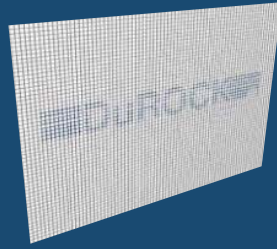
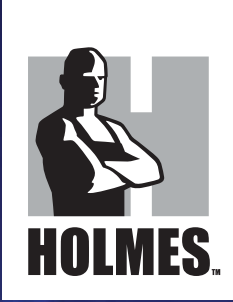
DuROCK Prep Coat is dry polymer based dry-mix material that is field-mixed with water. It is a trowel-applied high performance coating for use on DuROCK PUCCS and InsulROCK Systems as a non-combustible base coat and adhesive. Prep Coat D is a flexible and durable base coat that can also be used as a leveling coat for stucco, concrete and masonry substrates. It has excellent freeze-thaw stability, low water absorption, breathable to water vapour and non-combustible. It is a convenient product since it requires only water to be added on site.

PREP COAT Q

DuROCK Prep Coat Q is a fast drying, dry polymer based dry-mix material that is field-mixed with water. It is ideal for use in cold temperature, high humidity conditions. It is a trowel-applied high performance coating for use on DuROCK PUCCS and InsulROCK Systems as a non-combustible base coat and adhesive. Prep Coat Q is a flexible and durable base coat that can also be used as a leveling coat for stucco, concrete and masonry substrates. It has excellent freeze-thaw stability, low water absorption, breathable to water vapour and non-combustible. It is a convenient product since it requires only water to be added on site.

PERFECT PARGE

DuROCK Perfect Parge is a polymer based dry-mix material that. It is a trowel-applied adhesive for use in the attachment of decorative moldings and EPS trim on DuROCK PUCCS and InsulROCK Systems. Perfect Parge is a flexible and durable base coat that can also be used as a leveling coat for stucco, concrete and masonry substrates. It has excellent freeze-thaw stability, low water absorption, breathable to water vapour and non-combustible. It is a convenient product since it requires only water to be added on site.



DuROCK EIFS and Stucco Products

09 25 21



COMPONENTS

THE FINEST QUALITY COMPONENTS IN THE INDUSTRY

COMPONENTS
DuROCK Product Information

DuROCK
TEXTURED PROTECTIVE COATINGS

FIBREGLASS MESH

Mesh for DuROCK Exterior Insulation Finish Systems is made of alkali-resistant fibreglass. All mesh is made by a DuROCK-approved manufacturer, with DuROCK's logo plainly visible on the 4.5 and 6.0 ounce reinforcing mesh products.

EPS BOARD

Expanded Polystyrene (EPS) insulation board for DuROCK Exterior Insulation Finish Systems is made of 100% virgin polystyrene resin, aged and cut in accordance with the requirements of ASTM E2430, and compliant with ULC-S701. EPS insulation board is made by a DuROCK-approved manufacturer, and is packaged in bags with DuROCK's logo plainly visible. Please refer to EIF System specifications for applicable thicknesses & sheet size.

UNI-TRACK

DuROCK's patented Uni-Track is a PolyVinyl Chloride (PVC) extrusion designed to be used at horizontal terminations and at horizontal joints where DuROCK Exterior Insulation Finish Systems are expected to drain. Its one-size-fits-all profile eliminates the need to stock different profiles for every insulation thickness. DuROCK Uni-Track is three inches (76 mm) high, one inch (25 mm) wide, and eight feet (2.44 m) long. It is white in colour, but can be painted with most exterior latex paints.

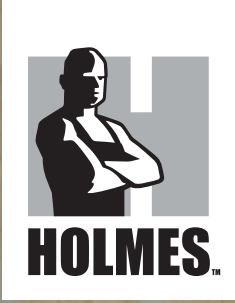
UNI-FLASH

DuROCK's patented Drainage Flash is a PolyVinyl Chloride (PVC) extrusion designed to be used at window head locations where DuROCK Exterior Insulation Finish Systems are expected to drain. It's one-size-fits-all profile eliminates the need to stock different profiles for every insulation thickness. DuROCK Drainage Flash is eight feet (2.44 m) long and is available in 1¼ inch (46 mm) and 2 inch (52 mm) widths. It is white in colour, but can be painted with most exterior latex paints.

SEAL & COAT EIFS TAPE

Seal & Coat EIFS Tape is a self-adhering membrane composed of a polyester fabric laminated to rubberized asphalt adhesive. The fabric strengthens the material while providing a surface which bonds with most coatings. The adhesive provides a waterproof, self-sealing layer which aggressively sticks to most clean, dry surfaces.





DuROCK EIFS and Stucco Products

09 25 23



THE FINEST QUALITY FINISH COATS IN THE INDUSTRY

DuROCK FINISHES
DuROCK Product Information

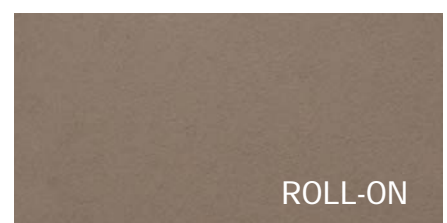
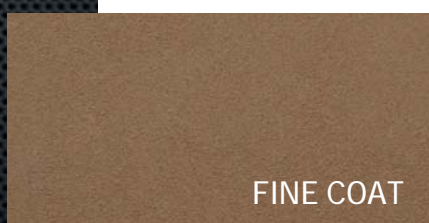
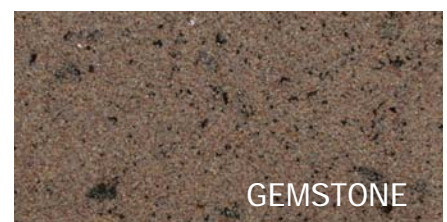
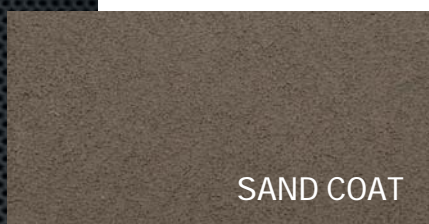
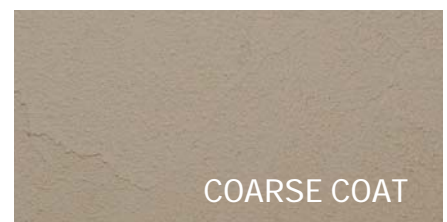
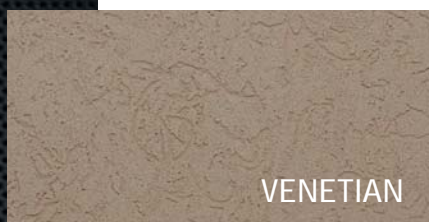
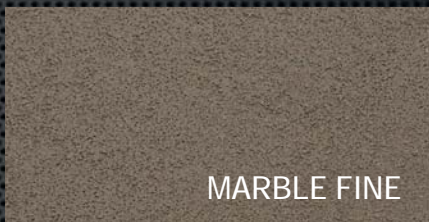
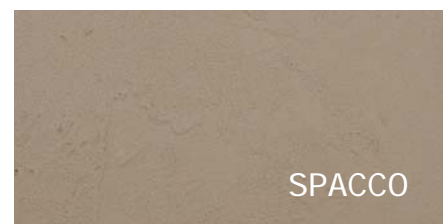
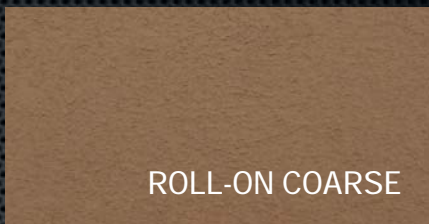
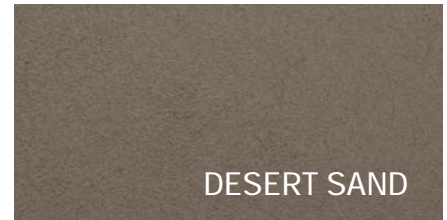
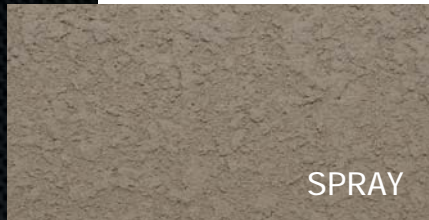
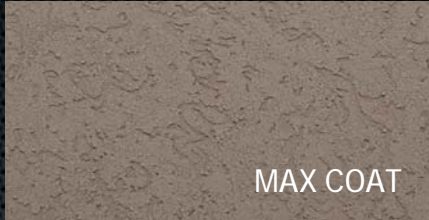
DuROCK
TEXTURED PROTECTIVE COATINGS

FINISHES

DuROCK FINISHES

DuROCK Product Information

THE FINEST QUALITY FINISH
COATS IN THE INDUSTRY





Decorative Overlay System

09 62 00



THE ULTIMATE IN ACRYLIC MODIFIED CEMENT-BASED COATINGS

Jewel Stone is the ultimate in acrylic modified cement-based coatings that transforms everyday concrete into beautiful decorative faux stone finishes. Jewel Stone can be used to restore and beautify old deteriorating concrete. It is ideal for walk ways, terraces, patios, pool areas, or any industrial or recreational flooring that requires the look and performance of stone. The luxurious and classic beauty of hand laid stone, slate, flagstone, fieldstone, tile or wood plank in any combination of colours can be achieved with Jewel Stone at a very affordable price.

JEWEL STONE
Decorative Overlay System

DuROCK
TEXTURED PROTECTIVE COATINGS

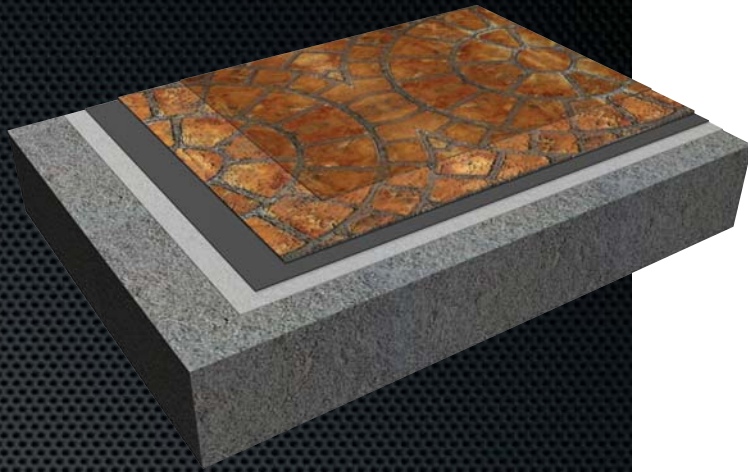


JEWELSTONE

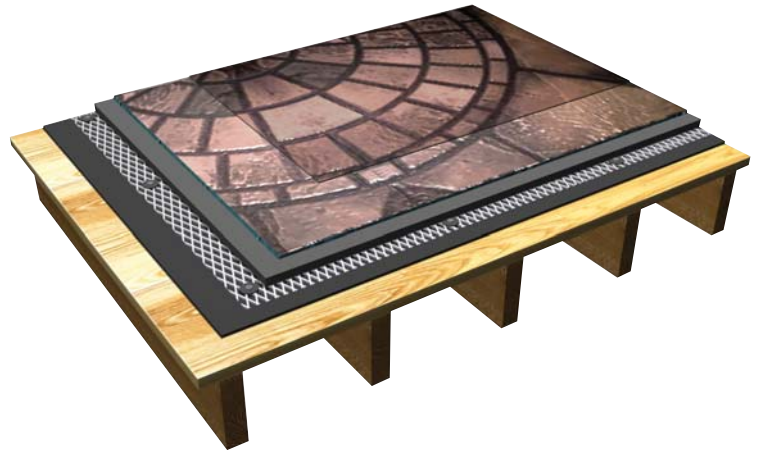
JEWEL STONE

Decorative Overlay System

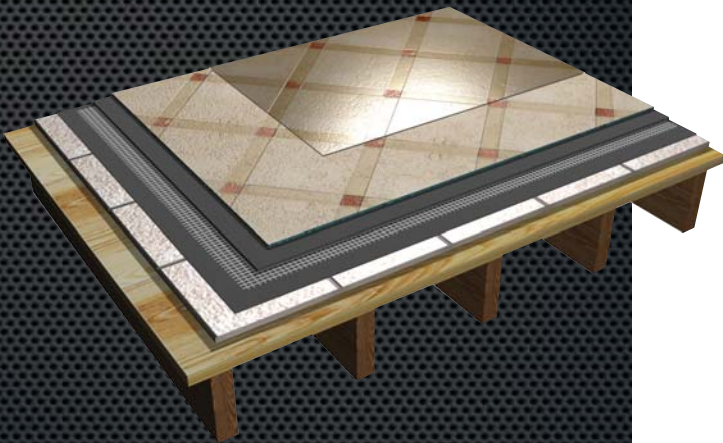
THE ULTIMATE IN ACRYLIC MODIFIED CEMENT-BASED COATINGS



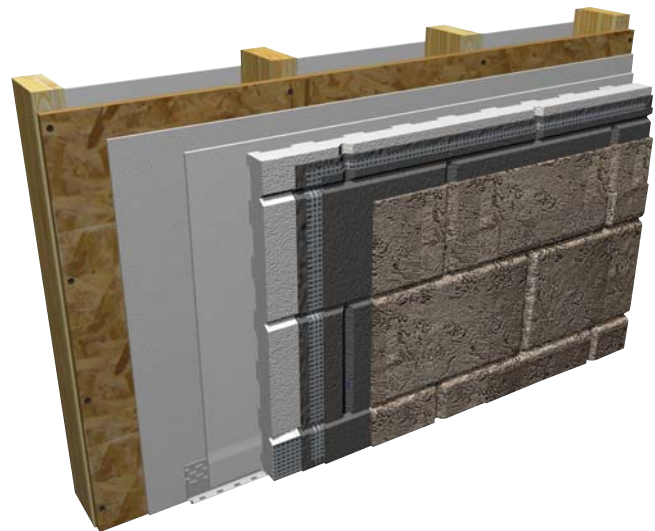
JEWEL STONE FOR
CONCRETE SURFACE



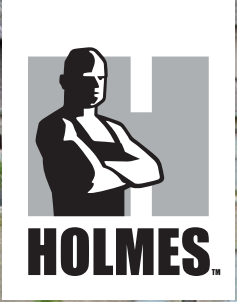
JEWEL STONE PLUS FOR
PLYWOOD SUB-FLOOR



JEWEL STONE QUARTZ FOR
EXISTING CERAMIC TILES

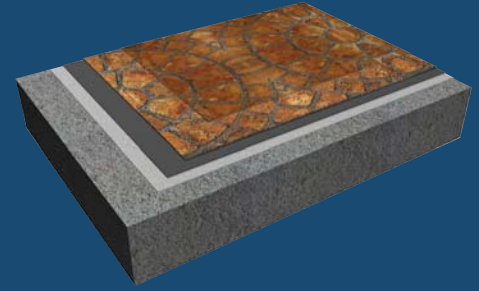


JEWEL STONE PLUS
OVER DUROCK EIFS



Decorative Overlay System

09 62 81



JEWEL STONE

DECORATIVE CONCRETE OVERLAY FINISH SYSTEM

Jewel Stone is the ultimate in acrylic modified cement-based coatings that transforms everyday concrete into beautiful decorative faux stone finishes. Jewel Stone can be used to restore and beautify old deteriorating concrete. It is ideal for walk ways, terraces, patios, pool areas, or any industrial or recreational flooring that requires the look and performance of stone. The luxurious and classic beauty of hand laid stone, slate, flagstone, fieldstone, tile or wood plank in any combination of colours can be achieved with Jewel Stone at a very affordable price.

JEWEL STONE
Decorative Overlay System

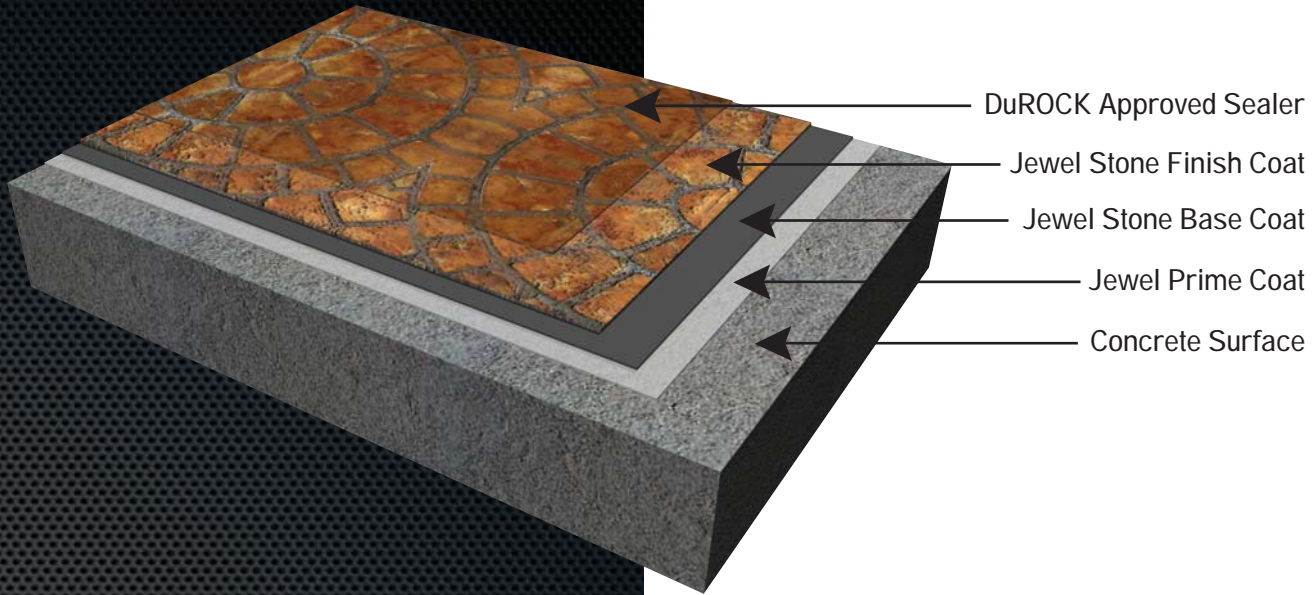
DuROCK
TEXTURED PROTECTIVE COATINGS

JEWEL STONE

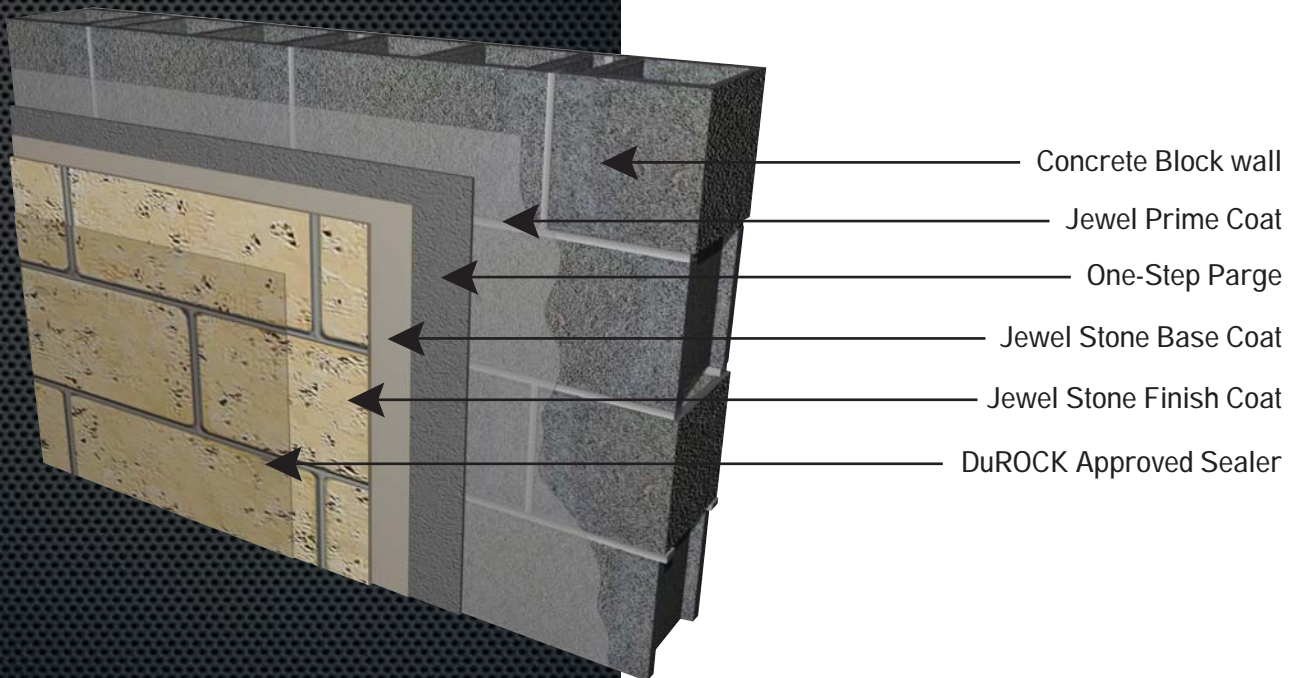
Decorative Overlay System

CONCRETE OVERLAY SYSTEM

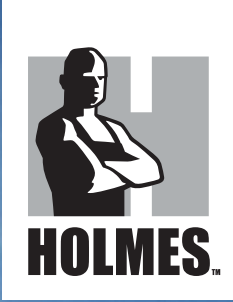
09 62 81



JEWEL STONE OVER CONCRETE FLOOR SURFACE

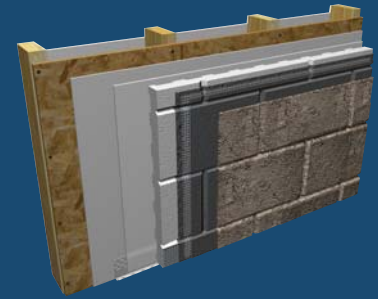


JEWEL STONE OVER CONCRETE BLOCK WALL



Decorative Overlay System

09 62 83



JEWEL STONE PLUS/QUARTZ

DECORATIVE FINISH SYSTEMS FOR FLOORS & WALLS

Jewel Stone is the ultimate in acrylic modified cement-based coatings that transforms everyday concrete into beautiful decorative faux stone finishes. Jewel Stone can be used to restore and beautify old deteriorating concrete. It is ideal for walk ways, terraces, patios, pool areas, or any industrial or recreational flooring that requires the look and performance of stone. The luxurious and classic beauty of hand laid stone, slate, flagstone, fieldstone, tile or wood plank in any combination of colours can be achieved with Jewel Stone at a very affordable price.

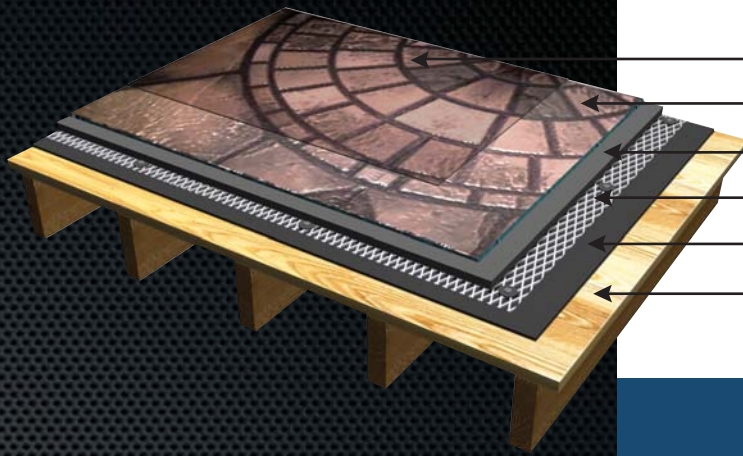
JEWEL STONE
Decorative Overlay System

DuROCK
TEXTURED PROTECTIVE COATINGS

JEWEL STONE

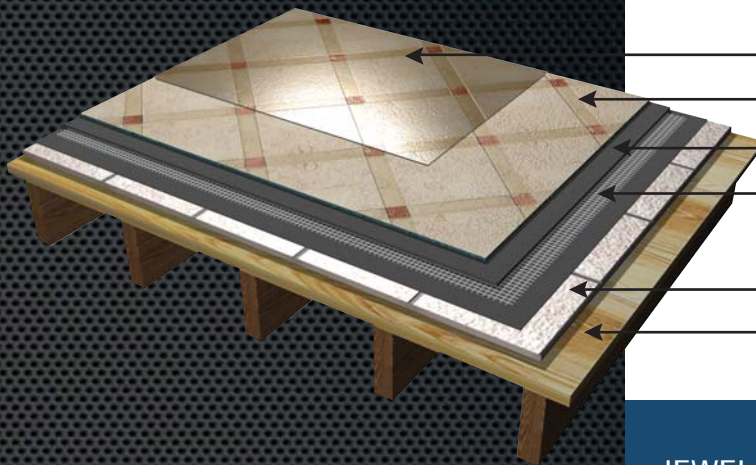
Decorative Overlay System

PLUS/QUARTZ



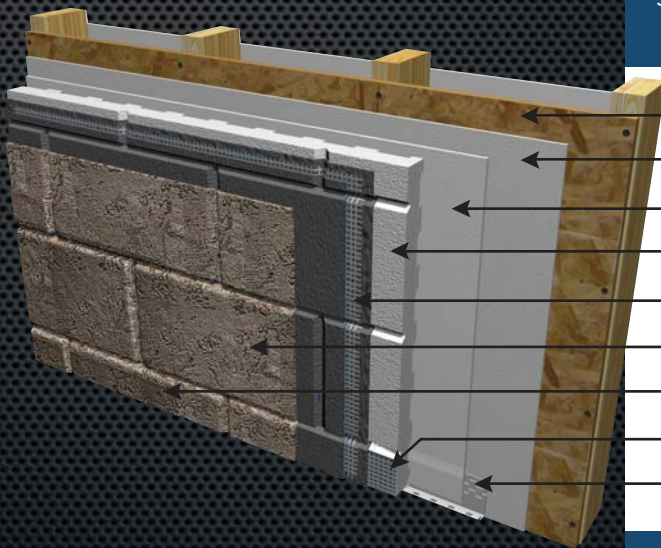
- DuROCK Approved Sealer
- Jewel Stone Finish Coat
- Jewel Plus Base Finish Coat
- Self-Furring Metal Lath
- Water Proof Membrane
- Plywood Substrate

JEWEL STONE PLUS FOR PLYWOOD SUB-FLOOR



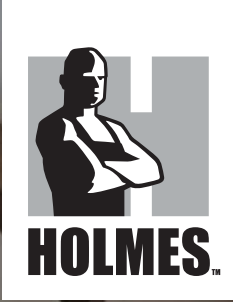
- DuROCK Approved Sealer
- Jewel Stone Finish Coat
- Jewel Stone Quartz Base Coat
- DuROCK Fibre Mesh Embedded in Base Coat
- Existing Tile Floor
- Plywood Substrate

JEWEL STONE QUARTZ FOR EXISTING CERAMIC TILES



- Plywood Substrate
- DuROCK Polar Bear
- Mechanical Fastener
- DuROCK Fibre Mesh embedded in Base Coat
- Jewel Stone Plus Finish Coat
- DuROCK Approved Sealer
- Backwrapped Starter Mesh
- DuROCK Uni-Track

JEWEL STONE PLUS OVER DUROCK EIFS



Decorative Overlay System

09 62 85



COLOURS & SEALERS

DESIGNER COLOURS & QUALITY SEALERS

JEWEL STONE
Decorative Overlay System

DuROCK
TEXTURED PROTECTIVE COATINGS

JEWEL STONE

Decorative Overlay System

COLOUR GUIDE



IRISH CREAM



CHAMOIS



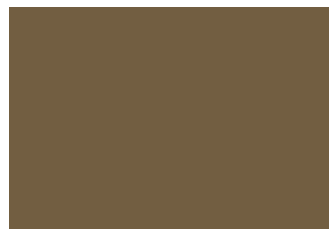
CHAMPAGNE



CAMEL



IVORY



SAHARA BEIGE



ALMOND



CHOCOLATE BROWN



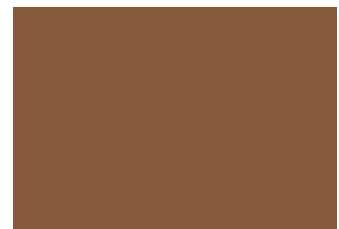
MOSS GREEN



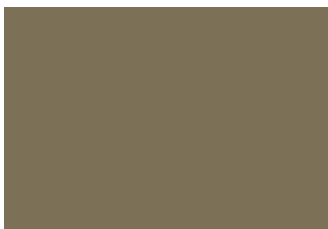
LIGHT SILVER



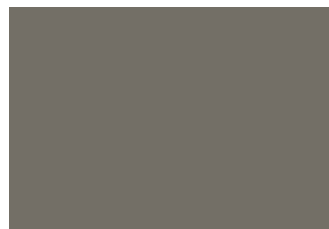
FLORENTINE BLUE



DUSTY ROSE



NATURAL GREY



PEARL GREY



AZTEC RED



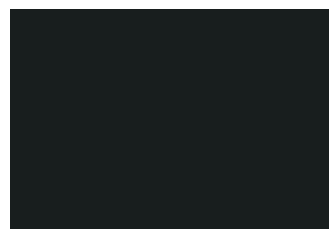
WINE



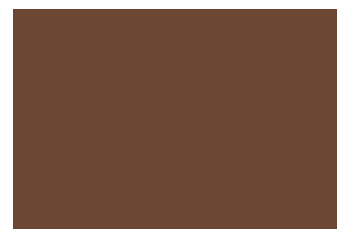
SILVER GREY



SLATE GREY



BLACK



MOCHA

This colour guide is just a representation of our standard Jewelstone colours. Actual colours may vary.



INTERIOR DESIGNER FINISHES

09 94 00



LUXURY INTERIOR WALL FINISHES

Jewel Stone is the ultimate in acrylic modified cement-based coatings that transforms everyday concrete into beautiful decorative faux stone finishes. Jewel Stone can be used to restore and beautify old deteriorating concrete. It is ideal for walk ways, terraces, patios, pool areas, or any industrial or recreational flooring that requires the look and performance of stone. The luxurious and classic beauty of hand laid stone, slate, flagstone, fieldstone, tile or wood plank in any combination of colours can be achieved with Jewel Stone at a very affordable price.

DESIGNER FINISHES
Luxury Interior Wall Finishes

DuROCK
TEXTURED PROTECTIVE COATINGS



INTERIOR

DESIGNER FINISHES

Luxury Interior Wall Finishes

FINISH SAMPLES

